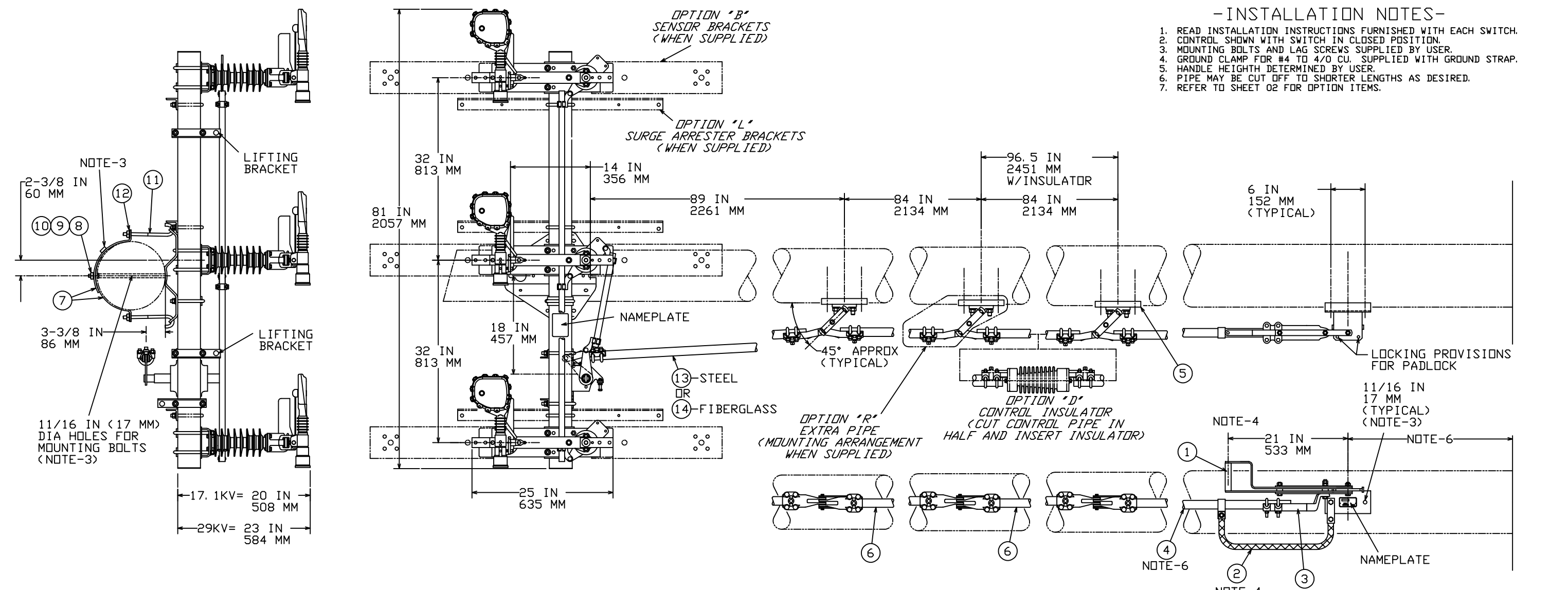


POSITION 3 CONTROLS			
ITEM	PART NUMBER	DESCRIPTION	QUAN
1	E801-1970	HANDLE, ASSEMBLY	1
2	091861	STRAP, GROUND ASSEMBLY	1
3	V801-1892	ADAPTER, ROD END ASSEMBLY	1
4	E818-2050	PIPE, LOWER SECTION	1
5	E818-2032	LEVER, STEADY ASSEMBLY	3
6	E818-2051	PIPE, CENTER SECTION	2
7	P816-0721	BAND, POLE	2
8	055869	BOLT, 1/2" X 1-1/2" HEX	1
9	055371	WASHER, 1/2" LOCK	1
10	055635	NUT, 1/2" HEX	1
11	E816-0752	BOLT, J-HOOK ASSEMBLY	2
12	055548	WASHER, 1/2" FLAT	2
13	E818-2064	PIPE, TOP SECTION	1
14	E818-2065	TUBE, FIBERGLASS ASSEMBLY	1

POSITIONS 4 THRU 11 OPTIONS				
	ITEM	PART NUMBER	DESCRIPTION	QUAN
B - SENSOR BRACKETS	B1	E818-1621	KIT, SENSOR MOUNTING	1
D - CONTROL INSULATOR	D1	E801-3397	INSULATOR, CONTROL	1
G - TERMINAL CONNECTORS	G1	SWL-025-B	TERMINAL, BRZ BOLTED CABLE	6
	G2	P815-0025	BOLT, 1/2" CAPTIVE	12
	G3	055634	NUT, 1/2" HEX	12
	G4	058883	WASHER, 1/2" FLAT	12
H - CAPTIVE HARDWARE	H1	P815-0025	BOLT, 1/2" CAPTIVE	12
	H2	055634	NUT, 1/2" HEX	12
	H3	058883	WASHER, 1/2" FLAT	12
L - SURGE ARRESTER BRACKETS	L1	P801-3468	BRACKET, SA	3
	L2	P816-0658	BOLT, MOUNTING	3
	L3	055548	WASHER, 1/2" FLAT	6
	L4	055371	WASHER, 1/2" SPRING LOCK	12
	L5	055635	NUT, 1/2" HEX	12
	L6	055545	BOLT, 1/2" X 2" HEX	6
R - EXTRA PIPE	R1	E818-2032	LEVER, STEADY ASSEMBLY	1
	R2	E818-2051	PIPE, CENTER SECTION	1
T - TERMINAL CONNECTORS	T1	ATC1343	TERMINALS	6

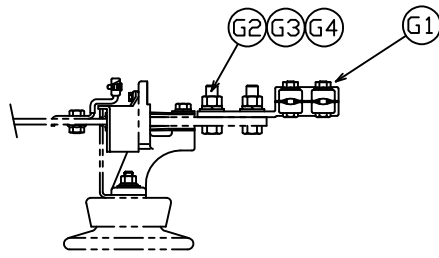


- INSTALLATION NOTES-**
1. READ INSTALLATION INSTRUCTIONS FURNISHED WITH EACH SWITCH.
 2. CONTROL SHOWN WITH SWITCH IN CLOSED POSITION.
 3. MOUNTING BOLTS AND LAG SCREWS SUPPLIED BY USER.
 4. GROUND CLAMP FOR #4 TO 4/0 CU. SUPPLIED WITH GROUND STRAP.
 5. HANDLE HEIGHT DETERMINED BY USER.
 6. PIPE MAY BE CUT OFF TO SHORTER LENGTHS AS DESIRED.
 7. REFER TO SHEET 02 FOR OPTION ITEMS.

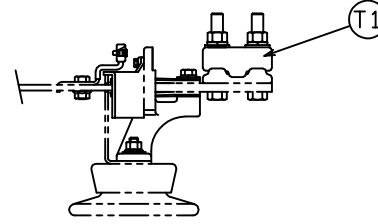
CONTROL "T" AND "G" SHOWN

NOTE: 28 FT/8.5 M OF PIPE SUPPLIED AS STANDARD WITH "T" OR "G" CONTROL. FOR ADDITIONAL PIPE SEE OPTION R

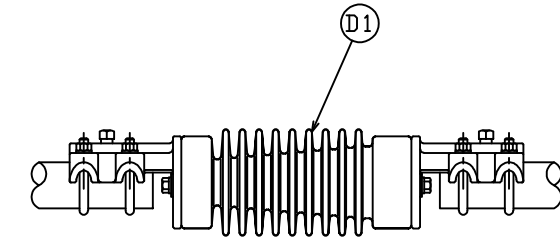
CHANCE TOLERANCE CHART EC 200713110446	HUBBELL POWER SYSTEMS POWER SYSTEMS, INC.		
	TITLE DRAWING, SWITCH CONTROL		
CONFIDENTIAL: THIS DRAWING AND ITS CONTENTS ARE CONFIDENTIAL AND THE EXCLUSIVE PROPERTY OF HUBBELL POWER SYSTEMS. NO PUBLICATION, DISTRIBUTION OR COPIES MAY BE MADE WITHOUT THE WRITTEN CONSENT OF HUBBELL POWER SYSTEMS. HUBBELL POWER SYSTEMS UNPUBLISHED. ALL RIGHTS RESERVED UNDER THE COPYRIGHT LAWS.	SIZE DWG NO. D SAAR12-T&G	CAT / PART / ASSY NO. SEE CHART	REV F
DO NOT SCALE THIS DRAWING	DRN BY GBR	DATE 03/28/03	SHEET 01 OF 02



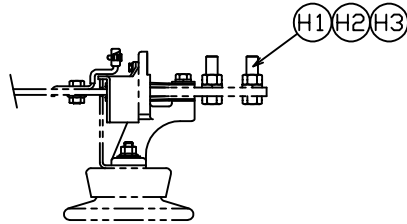
OPTION "G"
 TERMINAL CONNECTOR
 (BRONZE STRAIGHT BOLT TERMINAL
 CABLE TO FLAT TYPE SWL)



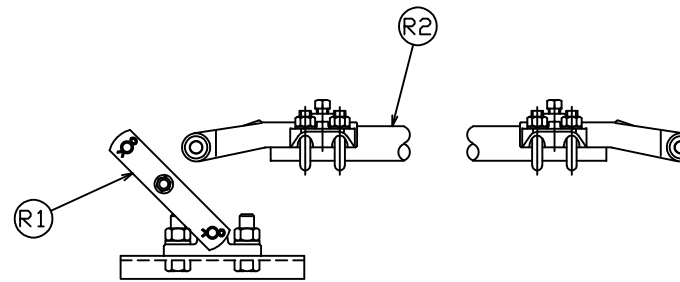
OPTION "T"
 TERMINAL CONNECTOR
 (PARALLEL GROOVE TERMINAL
 ASSEMBLY FOR #2-500 KCMIL)
 (TYPICAL 6 TERMINAL PADS)



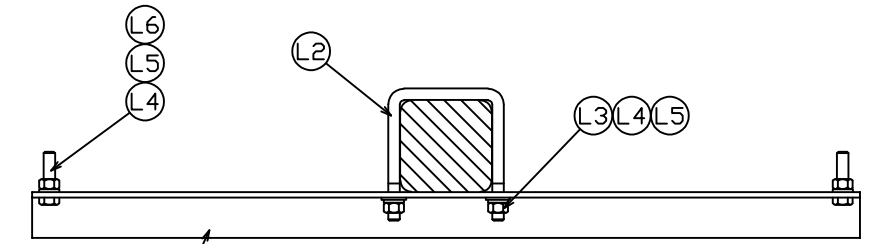
OPTION "D"
 CONTROL INSULATOR



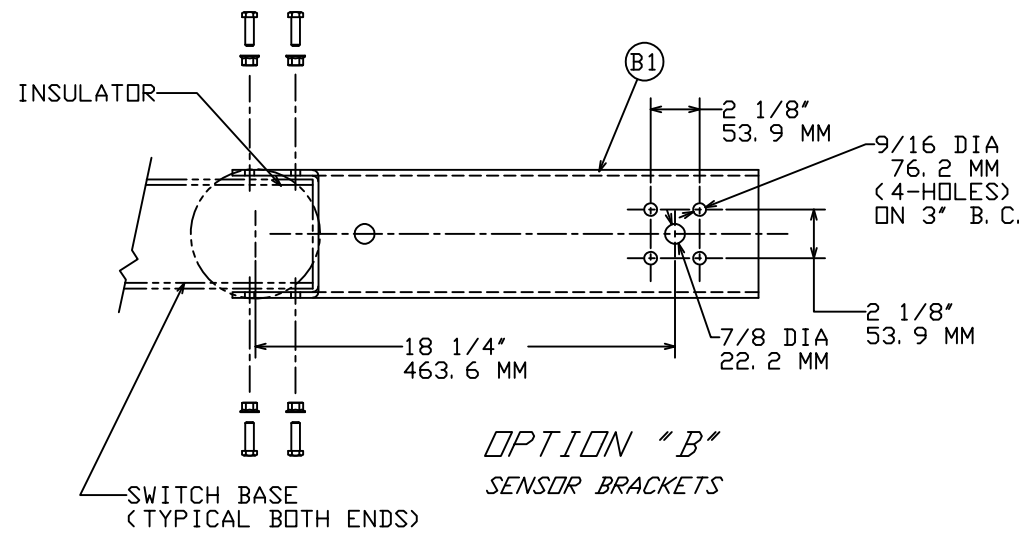
OPTION "H"
 CAPTIVE HARDWARE
 (TYPICAL 6 TERMINAL PADS)



OPTION "R"
 ADDITIONAL 7 FT./2134 MM OF CONTROL
 PIPE ASSEMBLY AND STEADY LEVER



OPTION "L"
 SURGE ARRESTER
 BRACKETS



CHANCE TOLERANCE CHART EC 200713110446		HUBBELL® POWER SYSTEMS POWER SYSTEMS, INC.	
TITLE DRAWING, SWITCH CONTROL			
SIZE D	DWG NO. SAAR12-T&G	CAT / PART / ASSY NO. SEE SHEET 1	REV F
DO NOT SCALE THIS DRAWING	DRN BY GBR	DATE 03/28/03	SHEET 02 OF 02

CONFIDENTIAL: THIS DRAWING AND ITS CONTENTS ARE CONFIDENTIAL AND THE EXCLUSIVE PROPERTY OF HUBBELL POWER SYSTEMS. NO PUBLICATION, DISTRIBUTION OR COPIES MAY BE MADE WITHOUT THE WRITTEN CONSENT OF HUBBELL POWER SYSTEMS. HUBBELL POWER SYSTEMS UNPUBLISHED. ALL RIGHTS RESERVED UNDER THE COPYRIGHT LAWS.